



**JUNIOR
CREWMEMBER
ACTIVITY BOOKLET**



WELCOME ABOARD!

WE SALUTE YOU ON YOUR FIRST DAY ABOARD, RECRUIT. YOU'VE MANAGED TO BE ASSIGNED TO ONE OF THE MOST DECORATED SHIPS IN THE FLEET, THE *USS HORNET*! NOW LET'S GET YOU SETTLED IN. FIRST, WE'LL NEED SOME BASIC INFORMATION.



Name: _____
Rank: **E-1, Recruit**
Ship: _____
Compartment: _____
Duty: **Training, 1700-1000**

TO START, YOU NEED TO KNOW HOW TO SPEAK LIKE A SAILOR!



FOR YOUR COMPARTMENT NAME, USE THE MAP TO FIND OUT WHAT YOUR ROOM IS CALLED.

English vs Navy Lingo

Wall	Bulkhead
Floor	Deck
Ceiling	Overhead
Room	Compartment
Bedroom	Berthing Compartment
Bed	Rack (or Bunk for Officers)
Toilet	Head
Stairs	Ladders
Kitchen	Galley
Dining Room	Mess
Drinking Fountain	Scuttlebutt

Top 5 Rocks & Shoals

(Rules of the Ship)

1. Stay with an adult at all times--they get lost easily and need your help to get out.
2. No running on the ship! These decks are steel so falling will hurt!
3. Be careful on ladders and going through doors. The doors have step-overs called knee-knockers because you'll knock your knees if you trip!
4. All food and drink should be kept to the Hangar Bay and Mess Deck.
5. Areas open for tour will have their lights on, doors open, and chains down. Please stay in these areas when walking around.

Facts About the USS Hornet

- The Navy passes names of old ships on to new ships to honor their history. The first Hornet was used during the Revolutionary War. Our USS Hornet is the 8th and last ship called Hornet. After us, the name was passed onto an airplane and today the Navy uses F/A-18 Super Hornets.
- Building the ship began on 3 August 1942 and ended on 30 August 1943, so the whole ship was built in just over a year and mainly by women like Rosie the Riveter!
- During World War II, this ship could hold about 95 airplanes. As the years passed, planes were built bigger and by 1970, only 44 planes could fit onboard.
- The ship usually had about 3,500 men onboard. Because there were so many people, the ship had most things any town does, including: a hospital, dentists, barbers, a jail, a church, sports teams, and even a movie theater!
- This ship was picked by the Navy to recover the astronauts from Apollo 11 and Apollo 12 after their trip to the moon. Look for the astronaut's footprints in Hangar Bay 2!

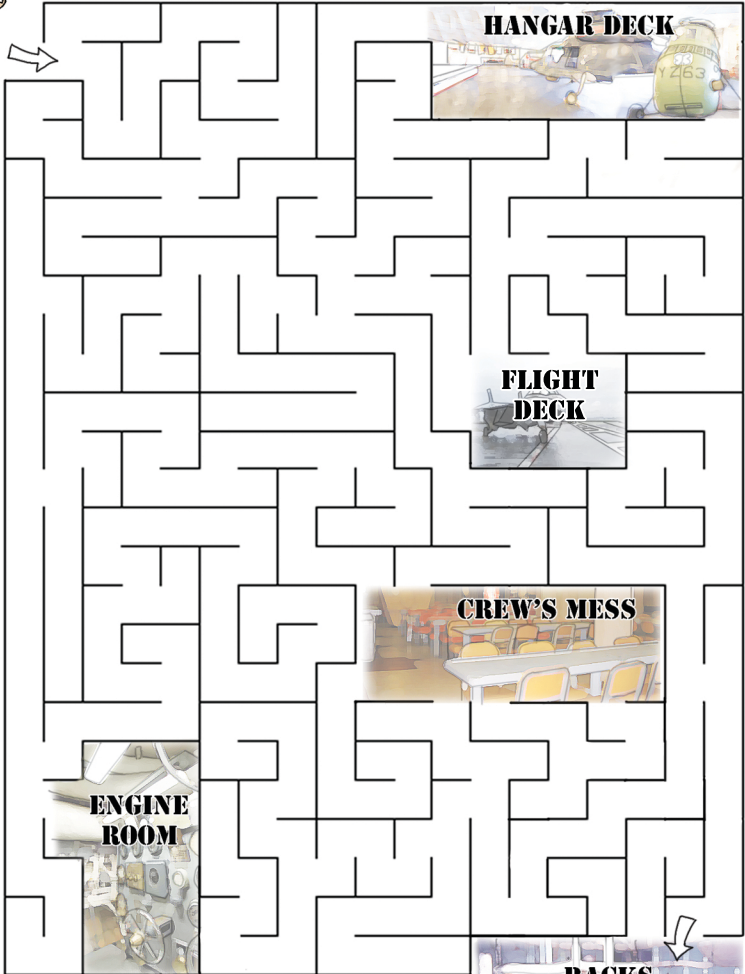


OKAY, NOW IT'S TIME FOR YOU TO FIND YOUR BERTHING COMPARTMENT WHERE YOU'LL SLEEP. HERE, TAKE YOUR SEABAG SO YOU HAVE YOUR GEAR. I'LL MEET YOU THERE!

Find your way to the Racks!



START



HANGAR DECK



FLIGHT DECK



CREW'S MESS



ENGINE ROOM

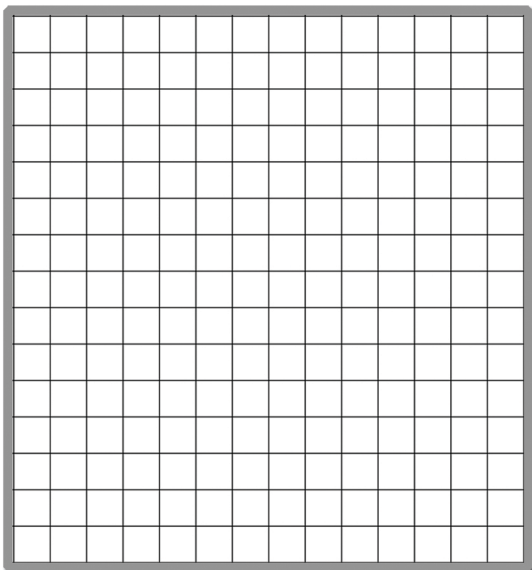


RACKS FINISH!

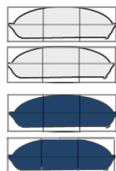
YOU MADE IT!
 DON'T THESE RACKS LOOK COMFORTABLE?
 BEFORE YOU HEAD TO DINNER, THOUGH, YOU NEED
 TO PUT AWAY YOUR GEAR FROM YOUR SEABAG.
 THAT LOCKER OVER THERE HAS
 YOUR NAME ON IT!



Fit all the items into the locker by drawing them in.
 I suggest using a pencil with a good eraser!



Hats



Socks



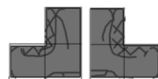
Undies



Cap



Shoes



Gloves



Towels



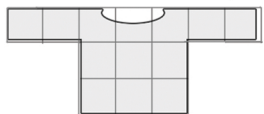
Swimsuit



Belts



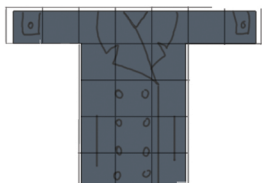
Shirts



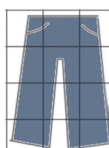
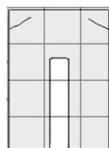
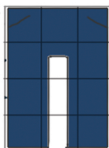
Blankets



Peacoat



Pants



Neckkerchief



Shoe Polish



Whisk



SHORT ANSWER QUESTIONS

1. What year did Hornet first set sail?

2. What year did it retire?

3. What is the Hornet's nickname?

4. Find the big SCOREBOARD in the HANGAR DECK. How many airplanes did the Hornet help bring down in World War 2? _____

5. Find the elevator(s) on the HANGAR DECK. How many are there and what are they for? _____

6. How many catapults does the ship now have and what are they for? _____

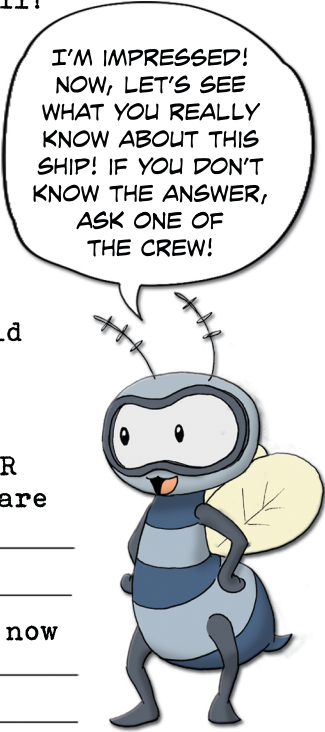
7. Whose footprints are on the HANGAR DECK?

8. Why are they there?

9. How many astronauts did the Hornet recover from the water? Can you name three? _____

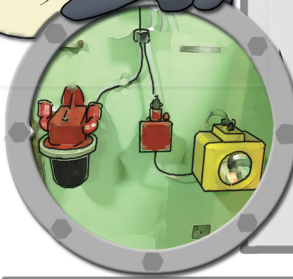
10. How many of each does the ship have?
Anchors? _____ Boilers? _____ Engines? _____

12. About how many men served on the ship at one time?





CAN YOU FIND ALL OF THESE ON THE SHIP? THEY'RE THINGS EVERY SAILOR SHOULD KNOW ABOUT!

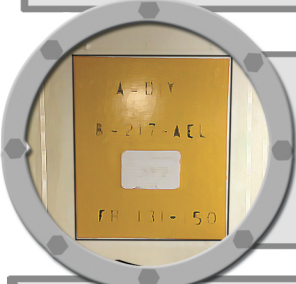
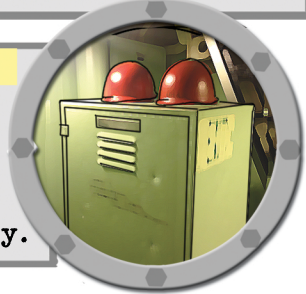


Red Lights & Battle Lanterns

Both of these types of lights were used during battle. The red lights help maintain your night vision and the battle lanterns are battery operated in case something happens to the ship's power.

OBA Lockers

OBA (Oxygen Breathing Apparatus) lockers are like small fire-fighting stations. They have oxygen filters inside and the red helmets are for the sailors' safety.

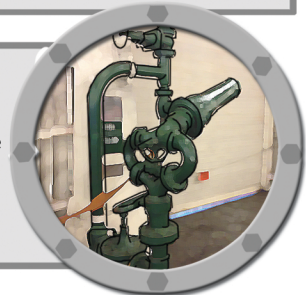


Compartment Identifiers

The ship is divided into a grid and rooms are found by where they are on that grid.

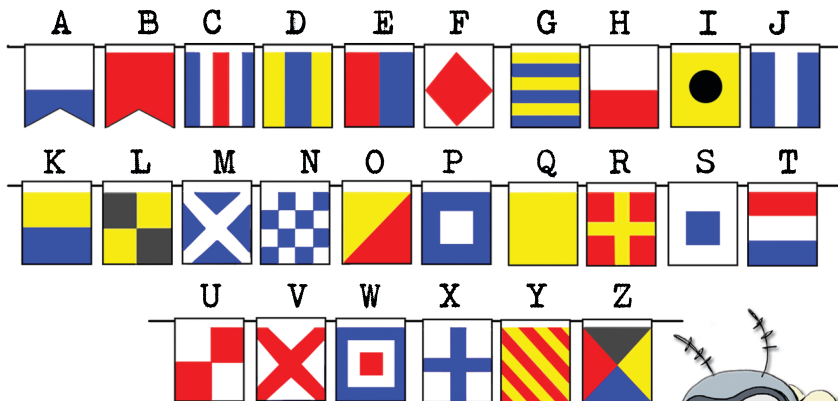
Fog Foam Pipe

All green pipes are for fog foam, used for oil and fuel fires. Inside is a mix of water and protein, which gets foamy and covers fires like a wet blanket to stop them.

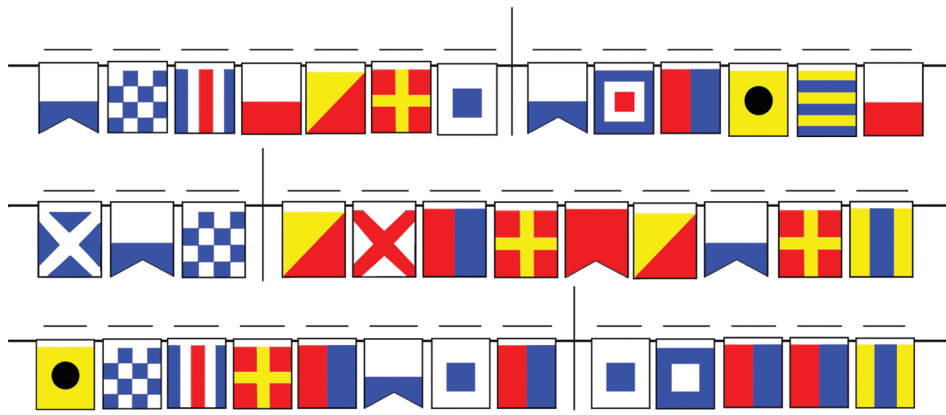


Water-Tight Doors

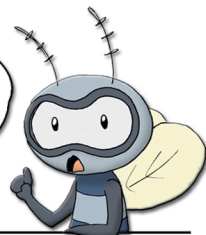
Many of the doors on the ship are like this one. Turning the wheel causes the door to seal up tight so that neither water or air can get past.



THESE ARE CALLED **SIGNAL FLAGS**. NAVY SHIPS USE THEM TO TALK TO ONE ANOTHER! CAN YOU FIGURE OUT WHAT THEY SPELL OUT BELOW?



ONE OF THE LINES IN THE HANGAR DECK SPELLS A REAL WORD! CAN YOU FIND IT?



Now try making your own!

DOUBLE PUZZLE:

An incoming radio message was scrambled--help!

PIHS

--	--	--	--

18 16

VAYN

--	--	--	--

3 12

VAEW

--	--	--	--

1

RAANEILP

--	--	--	--	--	--	--	--

14 15 10 2

AENOC

--	--	--	--	--

7 4 9 11

DILNNGA REAG

--	--	--	--	--	--	--

--	--	--	--

8 6 17 5

SERCUE

--	--	--	--	--	--

19 20 13

--	--

--	--	--	--

T	
---	--

--	--	--	--

--	--

1 2 3 4 5 6 7 8 9 10 6 7 11

--	--	--	--

F					T
---	--	--	--	--	---

			K
--	--	--	---

 !
12 7 13 14 15 16 17 18 6 19 20

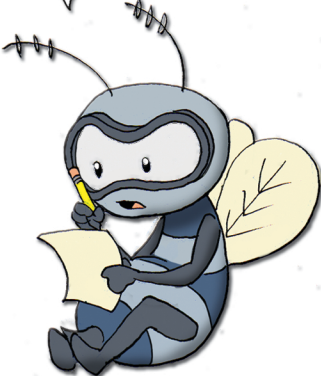
Unscramble each of the clue words. Copy the letters in the numbered cells to the other cells below with the same number.

Hint: If you can't figure out the scrambled words, try figuring out what the message is below and fill in the numbers above.

CROSSWORD

S G R C R H I E D N E E
 R P N E P A E D A A L G
 O K L I D R C Z E V E D
 G U H A H D F K H I V I
 K S F J S T A B K G A R
 T E N R O H R L L A T B
 B U N K K I D E U T O H
 I J R R G E U O B I R E
 C A T A P U L T W O R A
 E P M P B T E U A N U D
 R E T P O C I L E H Y D
 Y D P N E P Z H K Q B R

HMM...SOME OF THE WORDS ARE BACKWARDS...



BERTHING
 BUNK
 HELICOPTER
 RACK

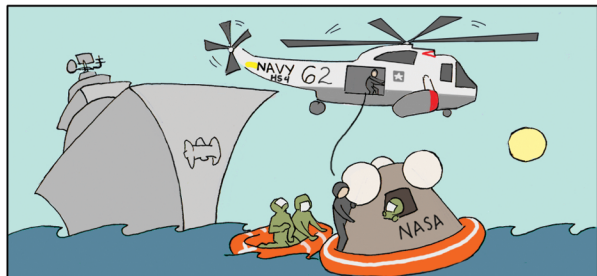
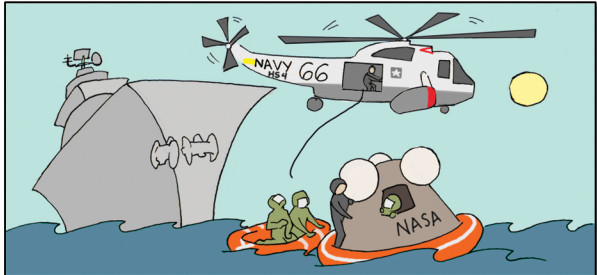
BRIDGE
 CATAPULT
 HORNET
 SHIP

BRIG
 ELEVATOR
 LADDER
 HEAD

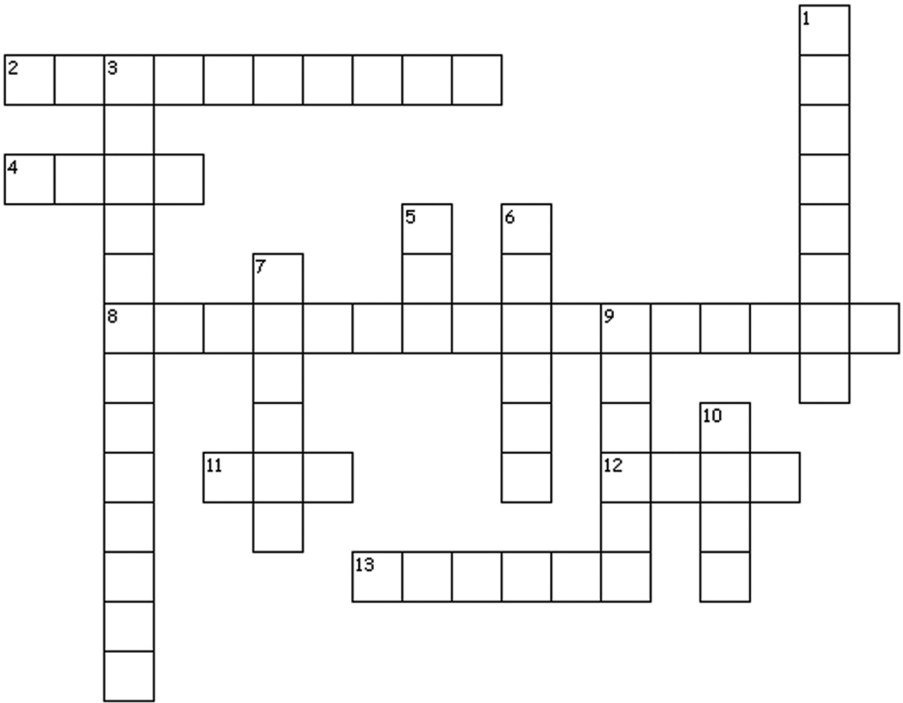
BULKHEAD
 SPLASHDOWN
 NAVIGATION

SPOT THE DIFFERENCES

Can you find the 6 things different between these two pictures?



CROSSWORD



Across

- 2. The name of our main deck where most of our planes are kept.
- 4. The ship's jail.
- 8. The first U.S. ship ever named Hornet was in this war.
- 11. The color of our night lights.
- 12. A bathroom on a ship.
- 13. Our name for a set of stairs.

Down

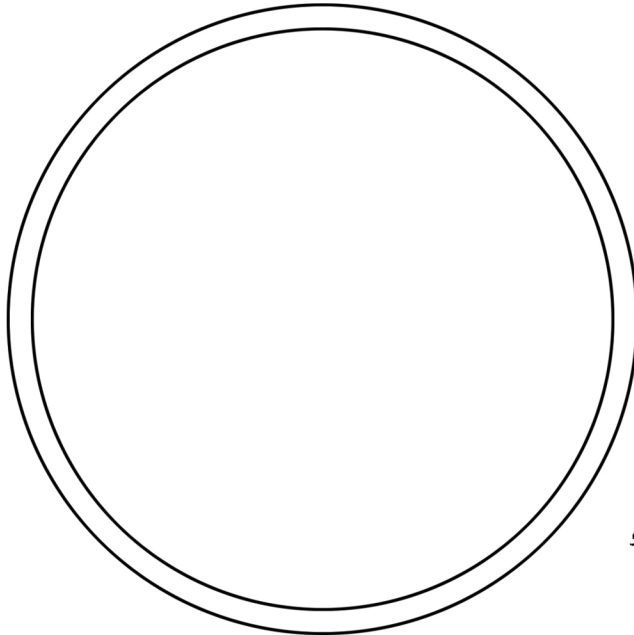
- 1. The navy term for "wall."
- 3. One of the Apollo 11 astronauts we recovered during Splashdown, also the first man on the moon.
- 5. The navy term for "back."
- 6. The name of the NASA missions that the Hornet participated in (Also the name of a Greek god).
- 7. This ship is the USS _____.
- 9. We have two and each weighs over 30,000 lbs.
- 10. A bed for an enlisted sailor.



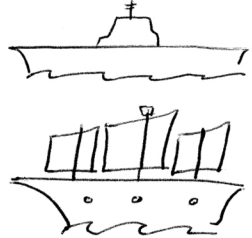
GREAT JOB, RECRUIT! YOU COMPLETED YOUR FIRST TRAINING MISSION. YOU FOUND YOUR WAY TO YOUR RACK, STOWED YOUR GEAR, AND PROVED YOUR SMARTS!

THE LAST THING TO DO IS DESIGN A PATCH TO COMMEMORATE YOUR MISSION. THE HORNET HAD DIFFERENT ONES OVER THE YEARS, EACH ONE IMPORTANT TO WHAT WE WERE DOING AT THE TIME. HERE ARE SOME IDEAS TO GET YOU STARTED...

Draw Here!



Ships



Animals



Hobbies



Symbols



TAKE-HOME SCIENCE EXPERIMENT

"This ship is really big and heavy. How can it float?"

It's a good question. After all, if you put a nail in a cup of water, it will sink. The nail is made of steel and our ship is made of steel, so why don't we sink too?

To find out what's going on, build a ship of your own from things around the house! You will need:

- A sink or bucket of water
- Aluminum foil
- Pennies

Step 1:

Build a little boat out of foil.

Step 2:

Fill up a sink and place the boat in the water. It should be floating!

Step 3:

Add pennies. Notice as you add more pennies, the boat starts going down. Add enough pennies and the boat will sink!

What's Going On?:

Ships like the Hornet float because of air trapped in their rooms and tanks. All of the air inside makes the average density of the ship less than water. Because it is less dense than the water, it is able to float (just like ice in a glass of water, which also has more air trapped inside it than water). This ability to float on top of something because of lower density is called buoyancy ("boy-ance-see").

When you start to fill your foil boat with pennies, it becomes denser because you are replacing air with something heavier, and the boat begins to sink. This is why a ship full of cargo floats lower than one with no cargo--because its empty spaces are now full of stuff!

If a boat ever gets too heavy (like if it had too much cargo or if water leaked into some of the empty air spaces) its average density would increase so much that it would eventually match the water. If this happened, the boat will stop floating and sink! This is why a nail will sink--it has no trapped air to keep it buoyant!



**THANK YOU FOR JOINING OUR CREW
ON AN OVERNIGHT ADVENTURE!**



**SEE YOU ON YOUR NEXT MISSION
ABOARD THE USS HORNET MUSEUM.**

[HTTP://WWW.USS-HORNET.ORG/](http://www.usshornet.org/)

